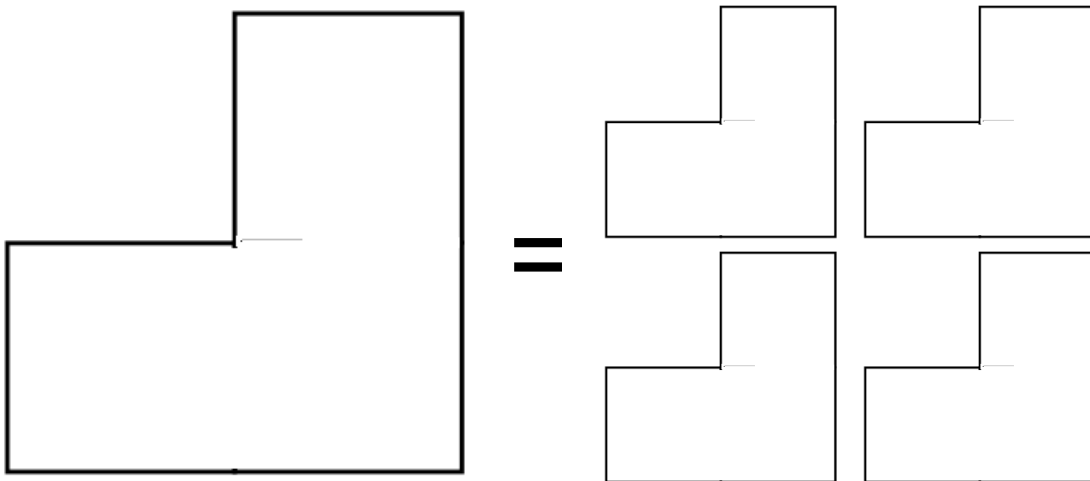
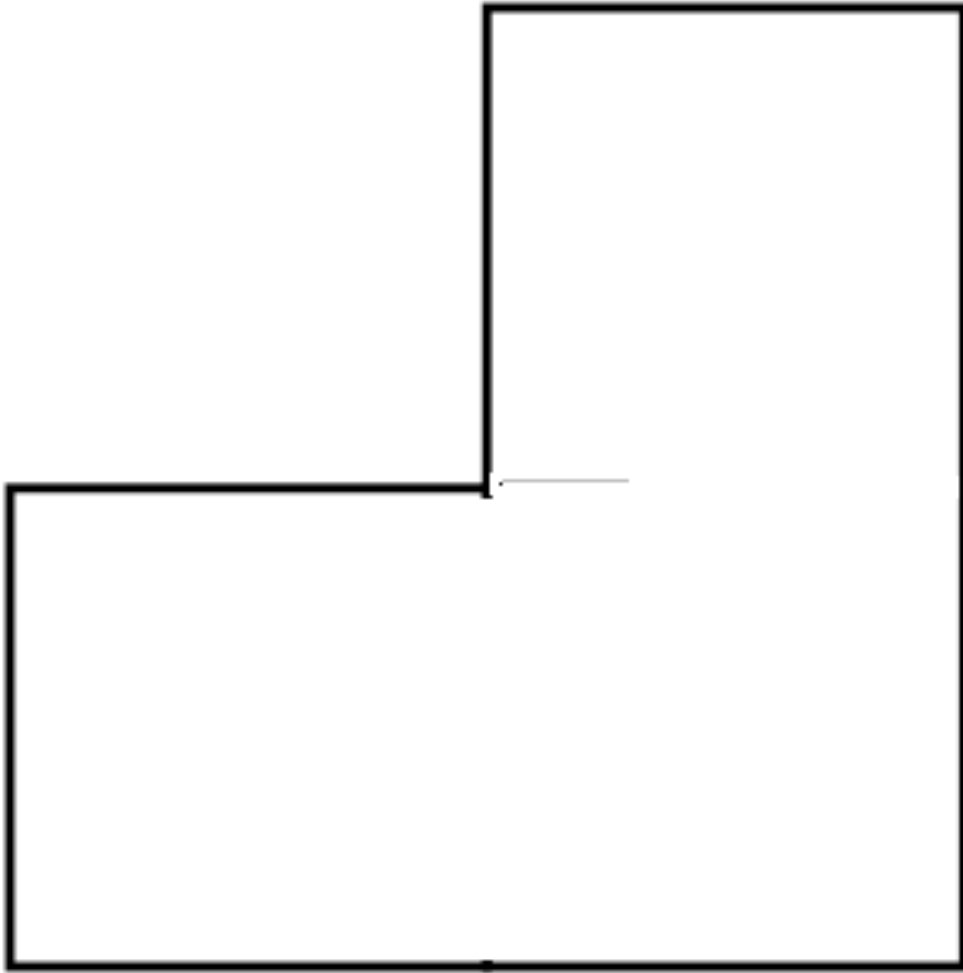


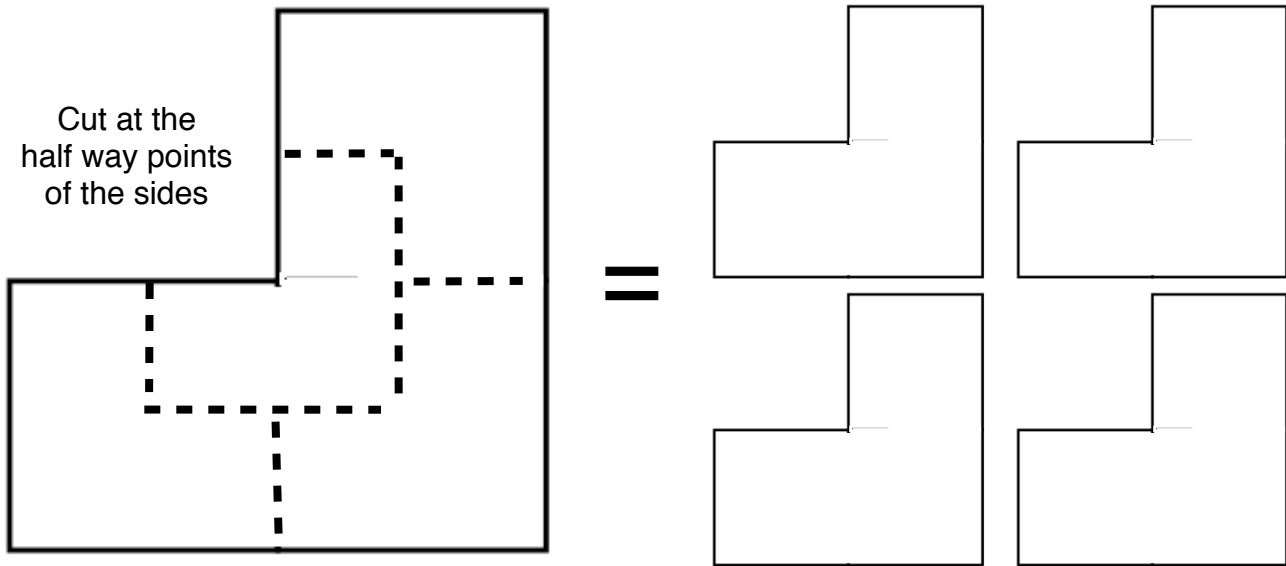
The 4 L's Puzzle

Use a scissors to cut out the figure below out. Then cut that figure in such a way as to create 4 smaller figures that are the same shape as the large without and leftover paper.



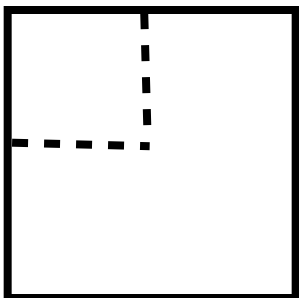
Solution 1:

Cut on the dotted lines as described below.



Solution 2:

Fold the 2 flaps of the large L over to make a square and then cut out the corner square as shown. Unfold the paper and you will get 1 small L and the folds showing will help you see where to make the other 2 cuts to get the other 3 L shapes.



Note: This works very well with a square napkin. Unfold the napkin, tear out one of the 4 small squares to make the L. Fold it up and make the required tears to get the small L shapes.